



CA  
ST  
IRON  
**FIRE**  
FOR  
NITU  
RE



Lunaway

**Complementi per stufe e caldaie  
Cast Iron Forniture**





Download digital catalogue

---

In the catalogue there are QR codes, if you do not have the reading software you can find all the documents on [lunaway-fireplace.com](http://lunaway-fireplace.com) and you can download the QR code reading software for free.

---

All images are property of Lunaway.  
Weights and dimensions may vary from this catalogue.

# INDEX

CAST IRON FURNITURE

- 01. **Caricatore stellare | Loader** / page 6
- 02. **Griglie mobili | Mobile grills** / page 8
- 03. **Braceri per caldaie |** / page 9  
**Braziers for boilers**
- 04. **Braceri per stufe |** / page 11  
**Braziers for stoves**
- 05. **Areatori | Areators** / page 14
- 06. **Anelli fumo | Smoke ring** / page 15
- 06. **Portine per stufe |** / page 16  
**Door for stoves**



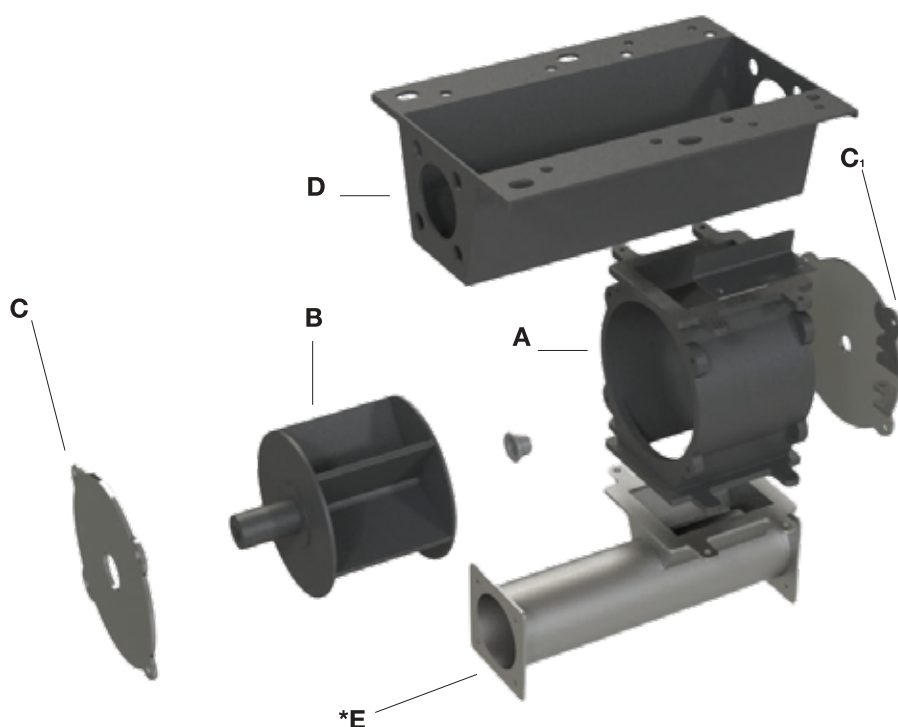




# Caricatore stellare / Loader



art.	dimensions (cm)	kg
FV CAR GJL	17 x 13,8 x 18,5 h	7,00



**A** GUSCIO in unica fusione di ghisa  
*SHELL in single cast iron piece*

**B** ROTORE in fusione di ghisa  
*ROTOR in cast iron*

**C** TAPPO In lamiera  
*PLUG in sheet metal*

**D\*** VASCA in acciaio  
*TUB in Steel*

**E\*** TUBO DI CONNESSIONE in acciaio zincato  
*CONNECTION TUBE in galvanized steel*

(\*)I componenti D - E sono accessori opzionali

(\*)Components D - E are optional accessories

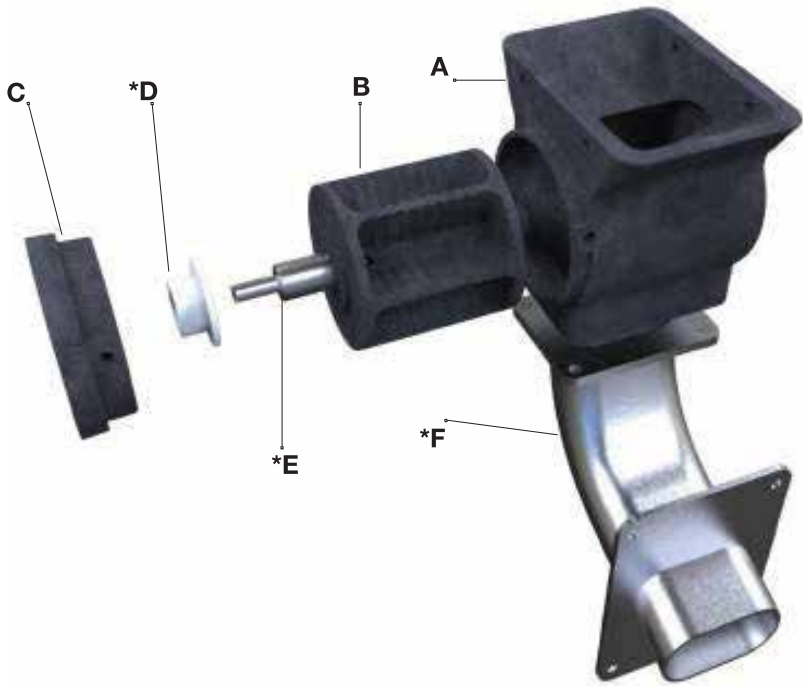
Compatibile con le maggiori marche di motoriduttori,  
semplicemente personalizzando il tappo.

Compatible with all major brands of geared motors,  
simply by customizing the plug.

**Esempio di Impiego** Application Example



art.	dimensions (cm)	kg
FV CAR2 GJL	10,7 x 11 ,2 x 10 ,8 h	2,90



- A** GUSCIO in unica fusione di ghisa  
*SHELL in single cast iron piece*
- B** ROTORE in fusione di ghisa  
*ROTOR in cast iron*
- C** TAPPO In fusione di ghisa  
*PLUG in Cast iron*
- D\*** BOCCOLA in Nylon  
*BUSH in Nylon*
- E\*** PIN in acciaio  
*PIN in Steel*
- F\*** TUBO DI CONNESSIONE in acciaio zincato  
*CONNECTION TUBE in galvanized steel*

(\*)I componenti D - E sono accessori opzionali  
(\*)Components F are optional accessories

Compatibile con le maggiori marche di motoriduttori,  
semplicemente personalizzando il tappo.

Compatible with all major brands of geared motors,  
simply by customizing the plug.

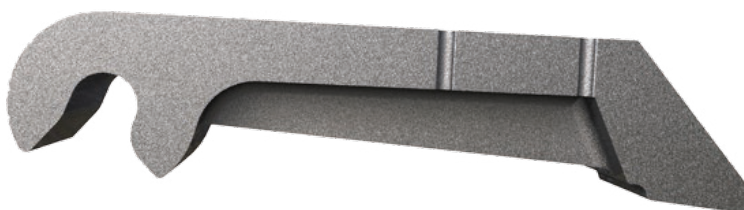
**Esempio di Impiego** Application Example

# Elementi per caldaia a griglia mobile / Moving grate boiler elements

Materiale: ghisa grigia EN GJL 200.  
Material: cast iron EN GJL 200.



art.	dimensions (cm)	kg
FV BOILER 253	25,3 x 5 x 5,6 h	2,80



art.	dimensions (cm)	kg
FV BOILER 362	36,2 x 5,8 x 5,4 h	4,00



Materiale: ghisa grigia EN GJL 200.  
Material: cast iron EN GJL 200.



art.	dimensions (cm)	kg
FV BOILER 255	25,5 x 5,8 x 7,8 h	2,70



## Personalizzazione materiale

Su richiesta possibilità di produzione con leghe caricate al cromo e nichel.

**Nichel:** diminuisce la sensibilità allo spessore;  
migliora la resistenza all'usura.

**Cromo:** migliora la resistenza meccanica;  
diminuisce la velocità critica di raffreddamento migliorando la temprabilità.

## Material customization

On request possibility of production with chrome and nickel alloys.

**Nickel:** decreases the sensitivity to thickness;  
it improves its resistance to use.

**Chrome:** improves the mechanical resistance;  
it reduces the critical speed of cooling thus improving its hardenability.



# Braceri modulari per caldaie / Modular braziers for boilers

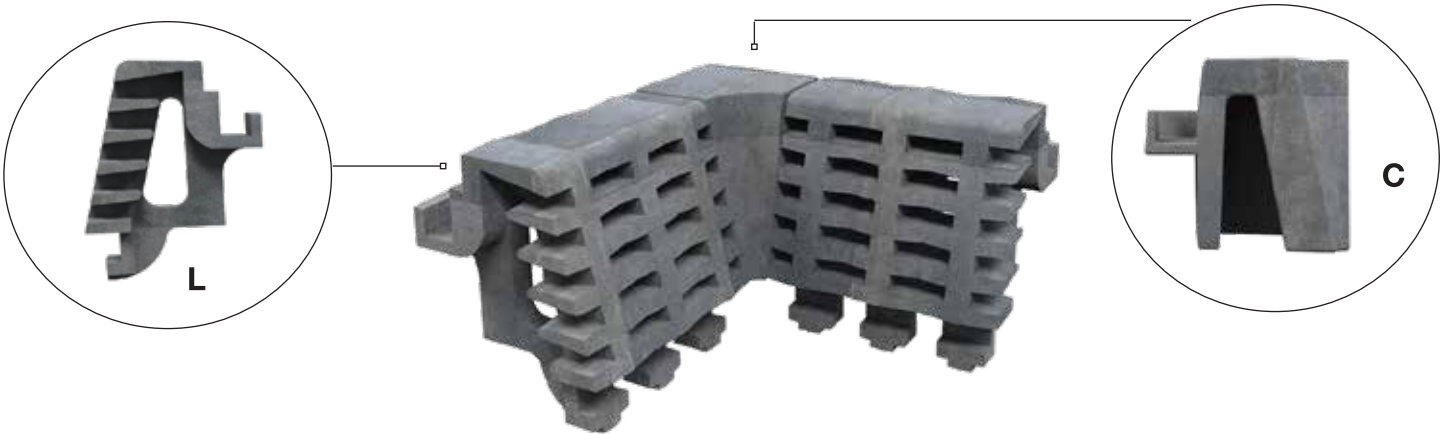


art.	dimensions (cm)	kg
FV BRA 1L	5 x 5,7 x 10,5 h	1,10
FV BRA 1C	5 x 5,7 x 10,5 h	0,60



Materiale: ghisa grigia EN GJL 200.  
Material: cast iron EN GJL 200.

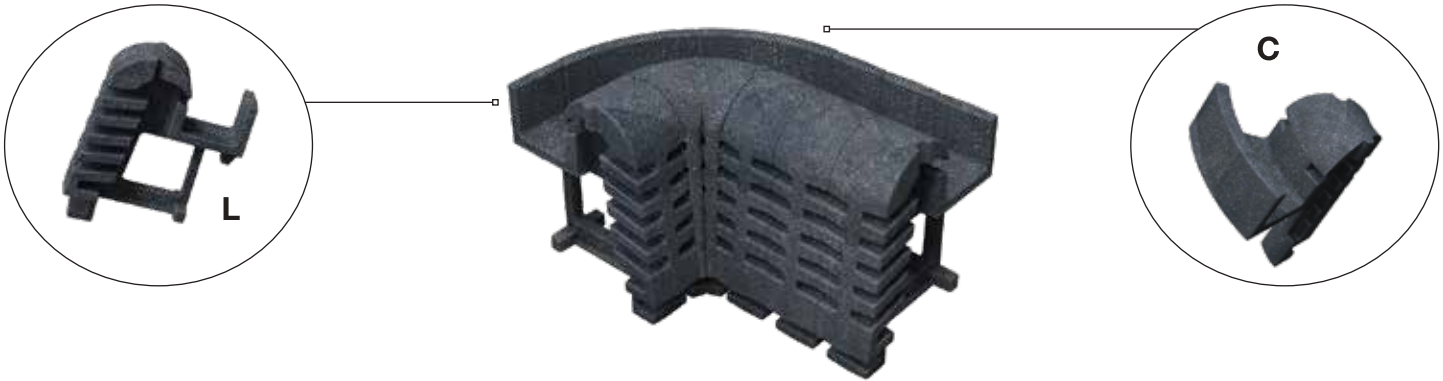




Materiale: ghisa grigia EN GJL 200.  
Material: cast iron EN GJL 200.



art.	art.	dimensions (cm)	kg
FV BRA 2L		5 x 12,3 x 15 h	1,75
FV BRA 2C		12,7 x 12,7 x 11,5 h	2,95



art.	dimensions (cm)	kg
FV BRA 3L	12,1 x 15,5 x 18,5 h	2,90
FV BRA 3C	5 x 15,5 x 18,5 h	2,40



Materiale: ghisa grigia EN GJL 200.  
Material: cast iron EN GJL 200.

# Braceri per stufe / Braziers for stoves



art.	art	dimensions (cm)	kg
FV BRA 113x93		11,3 x 9,3 x 8 h Ø diametro foro 13mm Ø glow plug hole 13mm	1,60
FV BRA 165x106		16,5 x 10,6 x 7,5 h Ø diametro foro 17mm Ø glow plug hole 17mm	2,00



art.	art	dimensions (cm)	kg
FV BRA 113x93 + TOP		11,3 x 9,3 x 11,6 h	1,90





art.	dimensions (cm)	kg
FV BRA 118x99	11,8 x 9,9 x 7,5 h Ø diametro foro 18mm Ø glow plug hole 18mm	1,30
FV BRA 136x92	13,6 x 9,2 x 7,1 h Ø diametro foro 18mm Ø glow plug hole 18mm	1,40
FV BRA 151x125	15,1 x 12,5 x 7,6 h Ø diametro foro 18mm Ø glow plug hole 18mm	1,90



art.	dimensions (cm)	kg
FV BRA 118x99 + TOP	11,8 x 9,9 x 12,7 h	1,90
FV BRA 136x92 + TOP	13,6 x 9,2 x 12,3 h	2,00
FV BRA 151x125 + TOP	15,1 x 12,5 x 12,9 h	2,90







art.	dimensions (cm)	kg
FV BRA 145x100	14,5 x 10 x 12,5 h Ø diametro foro 22mm Ø glow plug hole 22mm	2,05



### Trattamento di verniciatura

Possibilità di effettuare trattamento di verniciatura a forno con smalto nero silconico, resistente a picchi di temperatura fino a 500°C.  
Prezzo su richiesta.

### Painting treatment

Possibility of oven painting treatment with black silicone enamel, resistant to temperature peaks up to 500°C.  
Price at request.



# Areatori /Areators



art.	dimensions (cm)	kg
FV AREATORE 80	29 x 21 x 7,8 h (exit 8 cm)	3,20



art.	dimensions (cm)	kg
FV AREATORE 100	31 x 26 x 6,6 h (exit 10 cm)	4,50



# Anelli fumo / Smoke ring



	dimensions (cm)	kg
RING100	ø 11 x 5 h	0,64
RING120	ø 13 x 5 h	0,74

Con due fori interni per il fissaggio. *Whit two holes for fixing.*



art.	dimensions (cm)	kg
RING150	ø 15 x 5,1 h	1,30
RING200	ø 20 x 5,1 h	1,70

Con due asole interne per il fissaggio. *Whit two slots for fixing.*



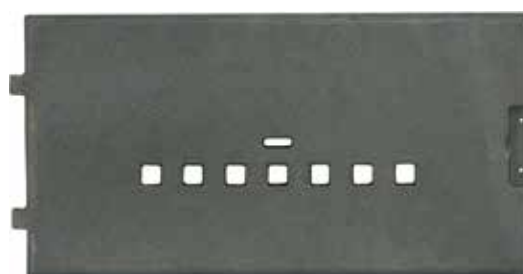
# Portine per stufe / Door for stoves



art.	dimensions (cm)	kg
DOOR 02	56,5 X 37,7 X 3,5 h	6,00



art.	dimensions (cm)	kg
DOOR 03	51,5 x 26,2 x 1,6 h	8,00



art.	dimensions (cm)	kg
DOOR 07	24 x 25 x 12 h	9,00



Maniglia in ceramica. Possibilità di personalizzazione inclusa nel prezzo.  
Ceramic handle. Possibility of customization included in the price.





# General terms and conditions of sale

## COMPANY INFO

CAST SRL  
VIA MONTE ROSSO, 2 | 01100 VITERBO - VT  
P. Iva 02271260560 | fv-cast@pec.it

## ORDERS

For orders made by e-mail, telephone, fax and regular mail the sales department of Lunaway will send a sales confirmation with all contractual conditions.

In this case, the order will be processed only after receiving the sales confirmation signed for acceptance by the customer. For orders placed via the website [lunaway-fireplace.com](http://lunaway-fireplace.com) the order will be processed without further confirmation.

## PAYMENTS

Payments shall be made in the manner and within the terms laid down in the order or sales confirmation.

Any delays in the agreed terms shall entail the charging of interest at the legal rate in force at the time of charging plus 3 points.

Below are our main payment methods:

BANK TRANSFER CAST SRL:

Deutsche Bank S.P.A. (Viterbo)  
IT27S031041450000000822126  
SWIFT : DEUTITM1810

Reason for payment: enter the surname of the purchaser. Shipping will take place when the money is credited to the bank or after sending the CRO which can be attached to the e-mail: [info@lunaway.it](mailto:info@lunaway.it)

CREDIT CARD OR PAYPAL:



Via the website [www.paypal.it](http://www.paypal.it) by sending the money to [info@lunaway.it](mailto:info@lunaway.it) | Reason for payment: put the surname and order reference

## PRICES

List prices are net of VAT and refer to standard items.

## WARRANTIES

The goods are guaranteed in terms of quality and method of construction of the materials used.

Any construction defects give to purchaser the right to replace the article or part of it free of charge. The right to replacement extends to cases where the article is damaged during transport, provided that such damage is declared to the carrier upon delivery of the goods and is noted on the delivery note.

## RIGHTS OF Cast s.r.l.

Cast s.r.l. reserves the right to make changes to the construction, measurements and weight of the items indicated in its catalogues and sales lists without prior notice.

## JURISDICTION

Any dispute arising from the sale and purchase relationship shall be settled by the Court of Viterbo.

## PRODUCT DISPOSAL

All the products in the catalogue are made of cast iron and steel, sustainable metals because they can be recycled an unlimited number of times, with considerable savings in raw materials and energy.

The foundry, in fact, allows metal products to be reused at the end of their life, returning them to their original state. A perfect example of a circular economy.



## PACKAGING

The cost of standard packaging is included in to the price. Standard packaging means packaging that provides adequate protection for the goods.

## SHIPPING

We ship to all European countries and the costs are updated on our website with reference to the place of destination.

The cost is calculated according to weight (maximum cost 4.00€/kg). The goods will be delivered by courier and unloading will only take place on the ground floor and not on upper floors. Except for unforeseen circumstances of the courier, the delivery of the goods will take place within 2 working days from the date of shipment for deliveries in Italy and 6 working days for deliveries in Europe.

## RETURNS AND REFUNDS

If for some reason you are not satisfied with your purchase, you can return one or more products purchased within and no later than 14 days from the date of delivery.

Return shipping costs in Italy are free of charge from the moment the Lunaway staff authorises the return, the products must be delivered to the authorised courier within and no later than 14 days.

Refunds will be made after we have received and verified the integrity of the product and will be made using the same method of payment. Cast s.r.l. reserves the right to refuse returns if communicated, sent or dispatched after days or if the products are not intact. All items are checked before shipping.

Items returned with damage, or any obvious changes, will be rejected and sent back to the customer, who will be charged the normal shipping costs (cash on delivery payment). If you receive defective or faulty goods, please

email [info@lunaway.it](mailto:info@lunaway.it) immediately. Replacement of an item of the same model and size is possible subject to availability in our warehouse, with free shipping. If the item cannot be replaced, normal refund procedures will be initiated.

To make a return, first of all write an e-mail to [info@lunaway.it](mailto:info@lunaway.it) indicating the reference number of the delivery note or invoice, the article code, the date the order was received and the reasons for the return. Once we have checked that the causes conform to our conditions of sale, you will receive an e-mail with instructions on how to contact the courier to deliver the goods, which must be done no later than 14 days from the date of authorisation of the return.

The PDF label will be sent Your later, which you should print out on a normal sheet of paper and stick onto the package (also with tape). We recommend that you keep the original packaging. This can be reused (if intact) by simply replacing the label. It is not necessary to return an entire order, but only a part of it.



Find out more on our website:

---

ph. +39 0761 18.70.772  
e-mail: [info@lunaway.it](mailto:info@lunaway.it)  
website: [www.lunaway.it](http://www.lunaway.it)





LUNAWAY | CAST IRON FIRE  
FURNITURE

ph. +39 0761 18.70.772  
e-mail: [info@lunaway.it](mailto:info@lunaway.it)  
website: [www.lunaway.it](http://www.lunaway.it)

